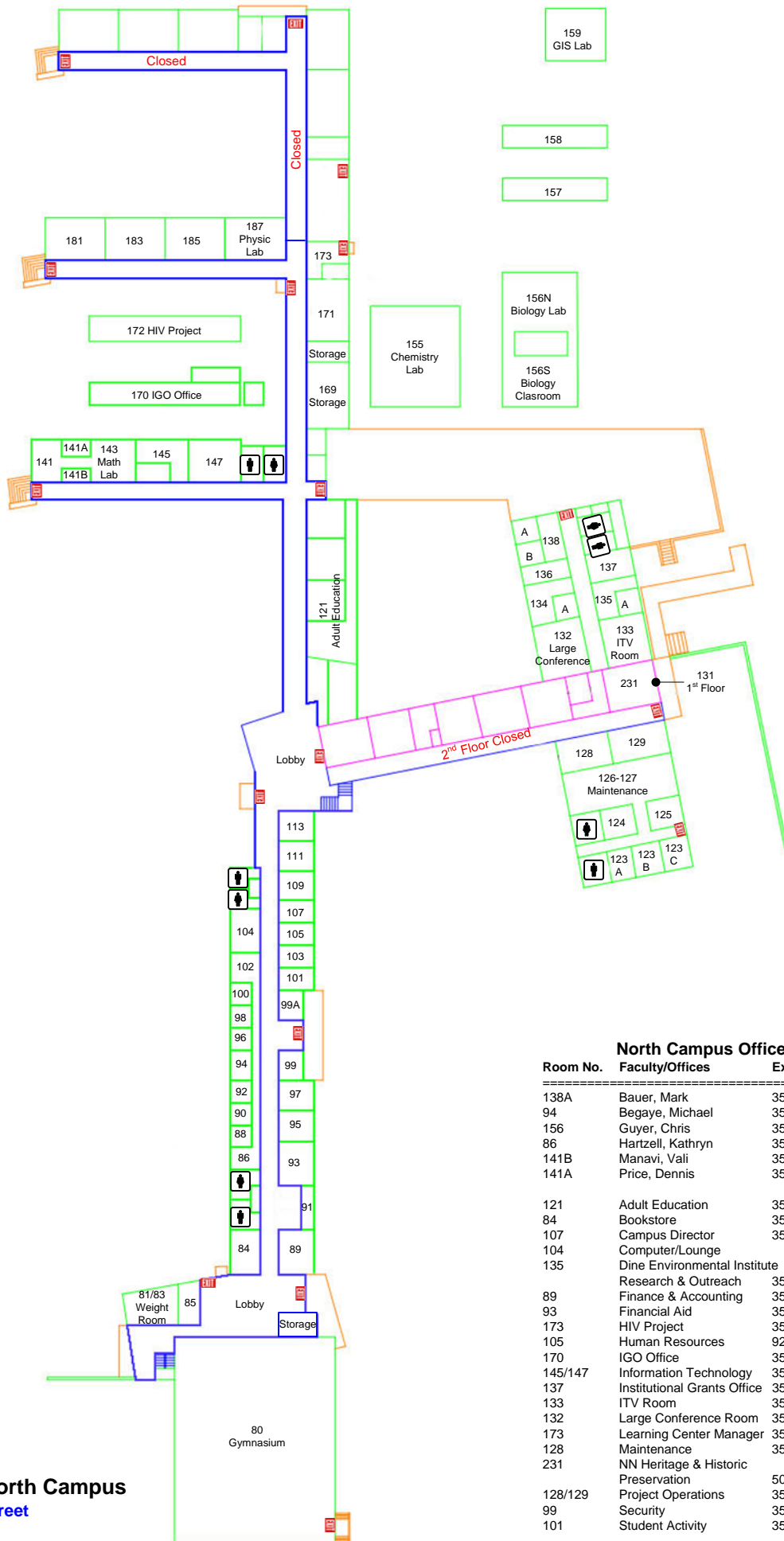


~ DINÉ COLLEGE – 2018 SHIPROCK PHONE DIRECTORY ~

Name	Phone No.	Department	Title	Room No.
Atine, Cynthia D.	368-3626	Student Success/Title III	Academic Advisor	SS-0111
Austin-Garrison, Martha	368-3650	School of Dine Studies & Education	Faculty	SS-0123
Bates, Cindy A.	368-3642	Library	Library Technician	LIB-0119
Bauer, Mark C.	368-3589	School of STEM	Faculty	SN-138A
Begay, Julia M.	368-3622	Admissions & Records	Office Coordinator	SS-0105
Begay, Maryann	368-3547	Finance & Accounting	Senior Bookstore Clerk	SN-0084
Begay, Sandra	368-3621	Student Success/Learning Center	Office Coordinator	SSB-102
Begay, Shawn R.	368-3544	Information Technology	Computer Technician	SN-0147
Begay, Sonja	368-3563	Adult Education Program	AE Instructor	SN-0121
Begay, Tomasina	368-3563	Adult Education Program	AE Data Technician	SN-0121
Begaye, Michael P.	368-3581	School of STEM	Faculty	SN-0094
Benally, Herbert	368-3651	School of Dine Studies & Education	Faculty	SS-0125
Bennett, Thomas	368-3629	Student Success/Title III	Dean/Intern Campus Director	SSB-114
Charley, Perry H.	368-3514	DEI Research & Outreach	Director	SN-0135
Chee, Donald	368-3582	School of STEM	Public Health Comm Liaison II	SN-Tr172
Chee, Marlencia	368-3625	Student Success/Title III	College Success Coordinator	SSB-110
Clahchischiligi, Sunnie R.	368-3630	Student Success/Title III	Professional Tutor	SSB-100
Cleveland-Mason, Elaine	505-368-1214	NN Heritage & Historic Preservation	Program Manager	SN-0231
Curley, Alfred	368-3521	Security Office	Security Officer	SN-0099
Cury, Michelle	368-3523	Office of the President	Executive Assistant	SS-0215
Dan, Jathan	368-3511	Financial Aid & Scholarship	Financial Aid Coordinator	SN-0093
Dayzie, Merle	928-724-6950	Human Resource	Director	SN-0103
Deschine, Sya	368-3615	Security Office	Security Officer	SS-0205
Frale, Juanita	368-3670	School of Business & Social Science	Faculty	SS-0226
Gamble, Dean C.	368-3541	Maintenance & Operation	Land Management Specialist	SN-0092
Garcia, Linda V.	368-3592	Public Health Grants	Research Coordinator	SN-0136
Garfield, Jervis	368-3563	Adult Education Program	AE Instructor	SN-0121
Guyer, Chris	368-3556	School of STEM	Faculty	SN-0156
Harrison, LeToy	368-3628	Student Success/Title III	Counselor	SSB-113
Harry, David J.	368-3599	Physical Plant	Senior Farm Technician	SN-0126
Hartzell, Kathryn	368-3584	School of STEM	Faculty	SN-0086
Hewakapuge, Samantha	368-3644	Library	Branch Librarian	LIB-0120
Himmelreich, Gerald W.	368-3662	School of Arts, Humanities, & English	Faculty	SS-0214
Howard, Shawna K.	368-3529	Institutional Grants Office	IGO Data Manager	SN-0170
Howe, Alton	368-3545	Information Technology	Computer Technician	SN-0147
Hunt, Darlene	368-3559	School of STEM	HIV Project Coordinator	SN-Tr172
Jim, Kim Rhonda	368-3530	Institutional Grants Office	IGO Compliance Officer	SN-Tr170
Johnson, Helena M.	368-3590	Public Health Grants	Administrative Assistant	SN-0138
Johnson, Michael	368-3518	Maintenance Department	Supervisor	SN-0126
Kwon, Haesong	368-3661	School of Arts, Humanities, & English	Faculty	SS-0107
Lewis, Adrian C.	368-3615	Security Office	Security Supervisor	SS-0205
Lewis, Anne M.	368-3643	Library	Library Manager	LIB-0124
Lewis, Gladys	368-3518	Physical Plant	Custodian	SN-0128
Lewis, Joletta B.	368-3513	Financial Aid & Scholarship	Administrative Assistant	SN-0093
Library, John Pinto	368-3646	Library	Circulation Desk	LIB-0117
Manavi, Valiollah	368-3537	School of STEM	Faculty	SN-141B
MacDonald, Dawn A.	368-3664	School of Business & Social Science	Faculty	SS-0115
McNeill, Amanda	368-3524	Office of External Affairs/Marketing	IGO Director	SN-0137
Mike, Gary J.	368-3565	Learning Center	Manager	SN-0173
Mike Jr., King	368-3673	School of Business & Social Science	Faculty	SS-0224
Moses, Julian	368-3521	Security Office	Security Officer	SN-0099
Nakai, Virgil	368-3518	Physical Plant	Maintenance	SN-0126
Nez, Stanley	368-3518	Physical Plant	Grounds Keeper	SN-0126
Nez, Timothy	368-3518	Physical Plant	Custodian	SN-0126
Ng, Vernon Filoteo	368-3663	School of Arts, Humanities, & English	Faculty	SS-0207
Paquin, Delbert	368-3542	Office of the President	Projects Operations Director	SN-0129
Paul, Esther M.	368-3631	Office of External Affairs/Marketing	Student Recruiter	SS-0106
Price, Dennis	368-3557	School of STEM	Faculty	SN-141A
Price, Gloria G.	368-3671	School of Business & Social Science	Faculty	SS-0223
Redhouse, Michael P.	368-3533	Student Program	Gym Manager/Activities Coord	SN-0101
Russell, Rosalind	368-3627	Student Success/Title III	Disability Coordinator	SSB-112
Singer, Neilroy	368-3554	School of STEM	TCUP	SN-0159
Smiley, Maryleen	368-3518	Physical Plant	Custodian	SN-0128
Todacheeney, Betty	368-3641	Library	Library Technician	LIB-0125
Topaha, Charlotte	368-3540	Physical Plant	Secretary	SN-0128
Tsinnie, Crystal R.	368-3528	Finance & Accounting	Office Coordinator	SN-0089
Wagner, Alice	368-3569	Adult Education Program	AE Instructor	SN-0121
Walter, Raymond	368-3518	Physical Plant	Maintenance Foreman	SN-0125
Walters, William	368-3546	Information Technology	System/Network Administrator	SN-0145
Willis, Norma	368-3515	Financial Aid & Scholarship	Financial Aid Coordinator	SN-0093



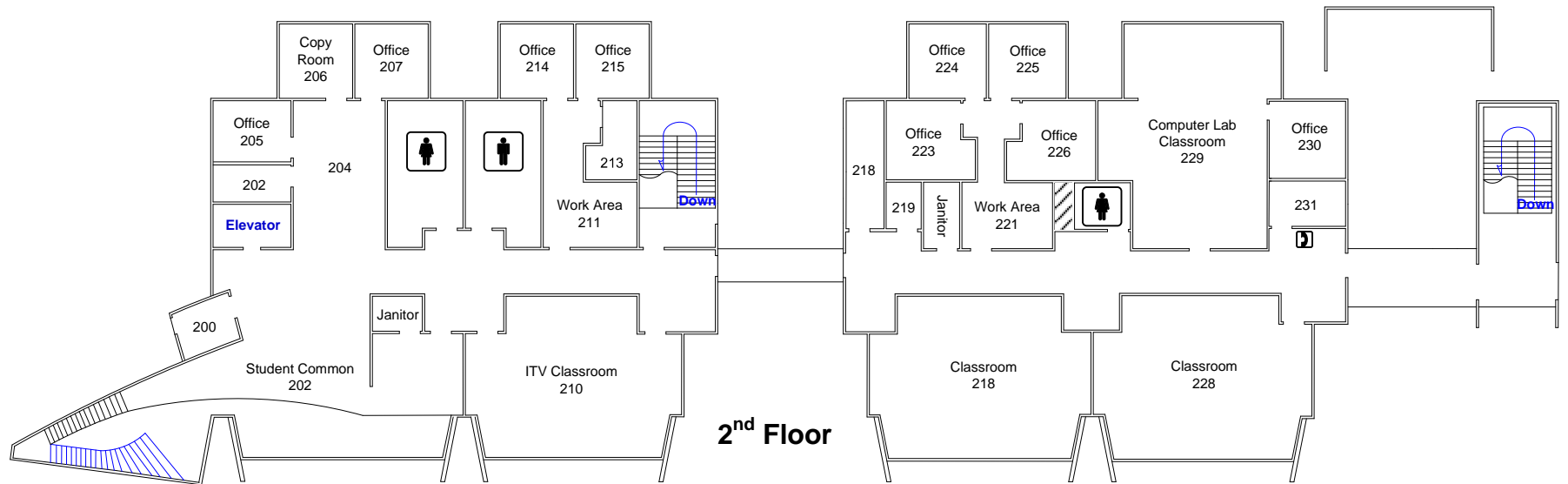
North Campus Offices

Room No.	Faculty/Offices	Extension
138A	Bauer, Mark	3589
94	Begaye, Michael	3581
156	Guyer, Chris	3556
86	Hartzell, Kathryn	3584
141B	Manavi, Vali	3537
141A	Price, Dennis	3557
121	Adult Education	3563
84	Bookstore	3547
107	Campus Director	3522
104	Computer/Lounge	
135	Dine Environmental Institute	
	Research & Outreach	3514
89	Finance & Accounting	3528
93	Financial Aid	3515
173	HIV Project	3559
105	Human Resources	928-724-6950
170	IGO Office	3529/3530
145/147	Information Technology	3546
137	Institutional Grants Office	3524
133	ITV Room	3510
132	Large Conference Room	3505
173	Learning Center Manager	3565
128	Maintenance	3518
231	NN Heritage & Historic Preservation	505-368-1214
128/129	Project Operations	3540
99	Security	3521
101	Student Activity	3533



Shiprock North Campus
1228 Yucca Street

Revised April 12, 2018



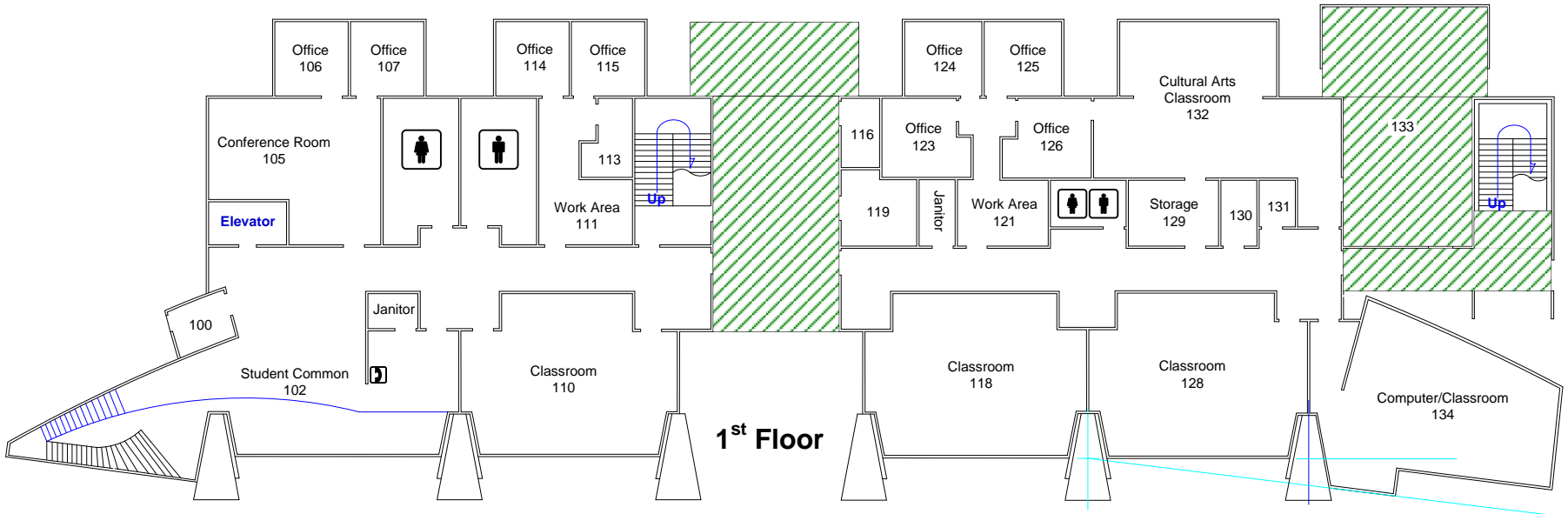
2nd Floor

South Campus Faculty

Room No.	Faculty	Ext.	Room No.	Faculty	Ext.
123	Austin-Garrison, Martha	3650	107	Kwon, Haesong	3661
125	Benally, Herbert	3651	224	Mike Jr., King	3673
226	Frale, Juanita	3670	207	Ng, Vernon Filoteo	3663
223	Price, Gloria	3671	214	Himmelreich, Gerald W.	3662

South Campus Offices

Room No.	Offices	Ext.
230	School of Business & Social Science	3672
210	ITV Room	3610
205	Security Office	3615
106	Student Recruiter	3631
105	Student Programs	
215	BOR Executive Assistant	3523



1st Floor



Shiprock South Campus

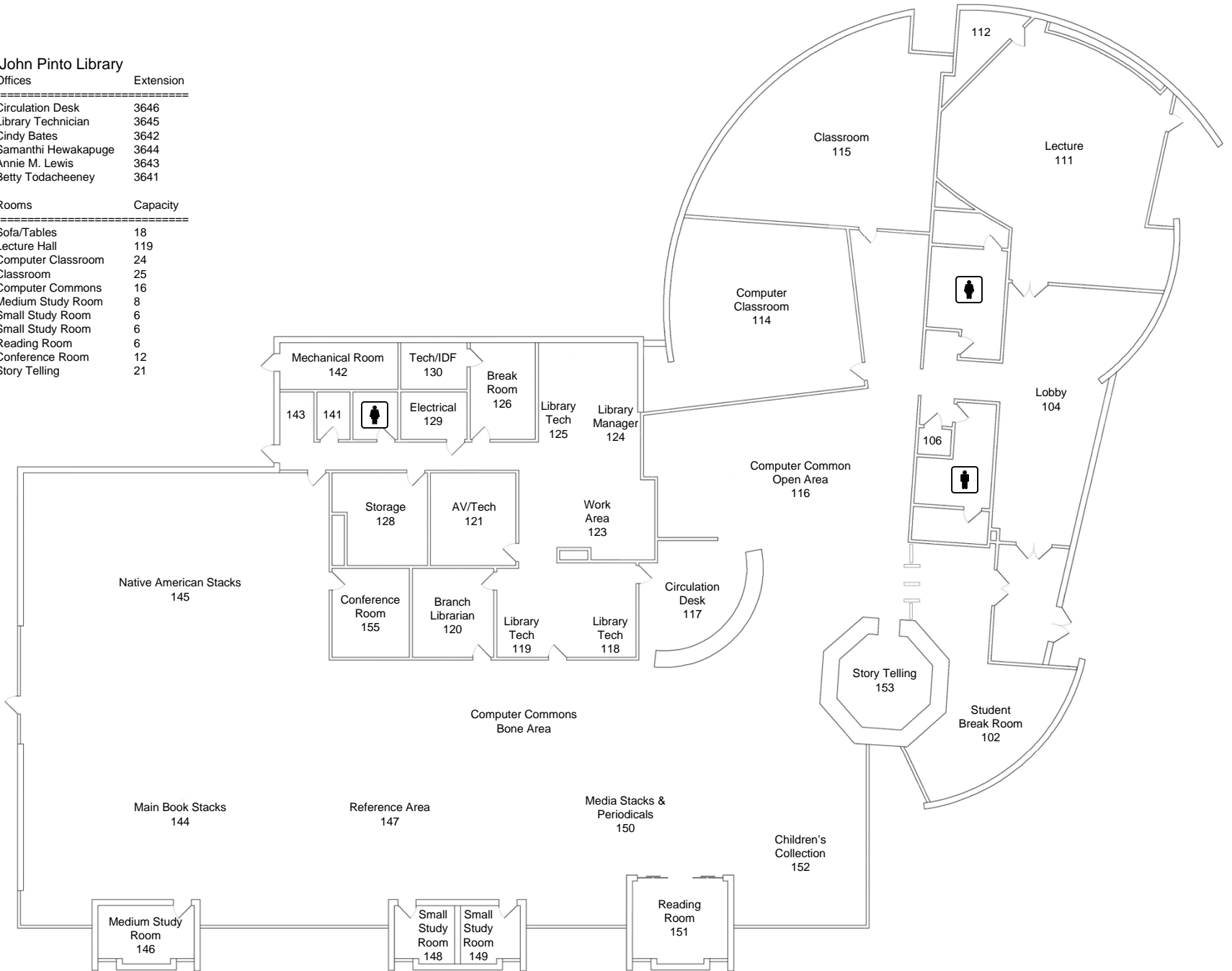
Hwy 64, N570

Revised: April 12, 2018

John Pinto Library

Room No.	Offices	Extension
117	Circulation Desk	3646
118	Library Technician	3645
119	Cindy Bates	3642
120	Samanthi Hewakapuge	3644
124	Annie M. Lewis	3643
125	Betty Todacheoney	3641

Room No.	Rooms	Capacity
	Sofa/Tables	18
111	Lecture Hall	119
114	Computer Classroom	24
115	Classroom	25
116	Computer Commons	16
146	Medium Study Room	8
148	Small Study Room	6
149	Small Study Room	6
151	Reading Room	6
155	Conference Room	12
153	Story Telling	21



Shiprock John Pinto Library

Hwy 64, N570

Revised: March 28, 2018



Room No.	Staff	Office	Ext.
111	Atine, Cynthia D.	Academic Advisor	3626
105	Begay, Julia M.	Office Coordinator	3622
102	Begay, Sandra	Administrative Assistant	3621
114	Bennett, Thomas	Dean	3629
110	Chee, Marlenia	College Success Coord.	3625
100	Clahchischiligi, Sunnie R.	Professional Tutor	3630
113	Harrison, LeToy	Counselor	3628
112	Russell, Rosalind	Disability Coordinator	3627

