

**2<sup>nd</sup> Floor**

**South Campus Faculty**

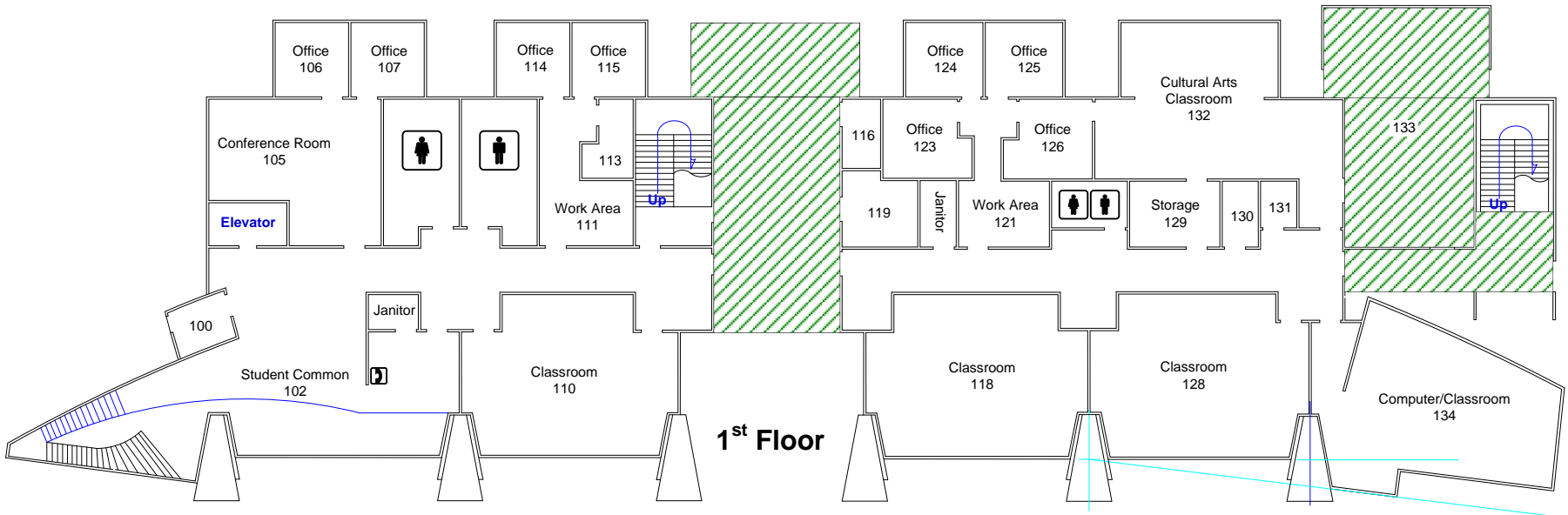
| Room No. | Faculty                 | Ext. |
|----------|-------------------------|------|
| 123      | Austin-Garrison, Martha | 3650 |
| 125      | Benally, Herbert        | 3651 |
| 226      | Fraley, Juanita         | 3670 |
| 126      | Goldtooth Sr., Tony     | 3652 |
| 214      | Himmelreich, Gerald W.  | 3662 |

| Room No. | Faculty            | Ext. |
|----------|--------------------|------|
| 107      | Kwon, Haesong      | 3661 |
| 224      | Mike Jr., King     | 3673 |
| 207      | Ng, Vernon Filoteo | 3663 |
| 223      | Price, Gloria      | 3671 |

**South Campus Offices**

| Room No. | Offices             | Ext.         |
|----------|---------------------|--------------|
| 215      | Academic Assessment | 3616         |
| 230      | BASET               | 3672         |
| 214      | Dean of the Faculty | 928-724-6973 |
| 210      | ITV Room            | 3610         |
| 205      | Security Office     | 3615         |

| Room No. | Offices           | Ext. |
|----------|-------------------|------|
| 106      | Student Recruiter | 3631 |
| 105      | Student Programs  |      |



**1<sup>st</sup> Floor**



**Shiprock South Campus**

Hwy 64, N570

Revised: September 14, 2017